

ATL THE BLOCK GA

AT Phipps

3535 Peachtree Rd NE, Atlanta, GA 30326

A Reimagined Experience in the Heart of Buckhead  
SUITE 220, 3,789 SF





MIDTOWN / DOWNTOWN

LENOX SQUARE MALL

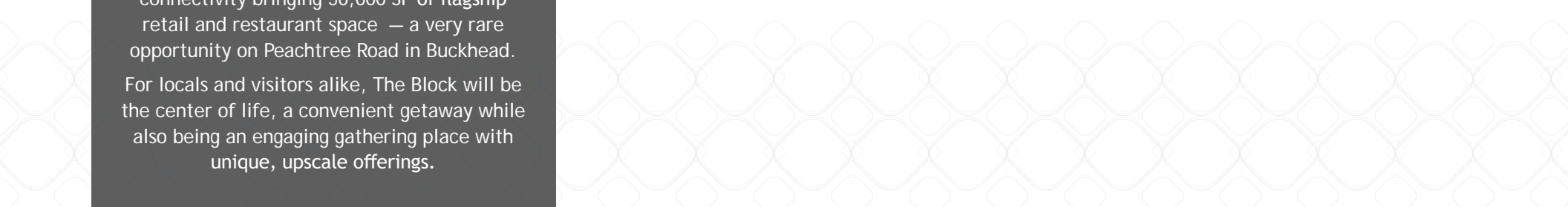
PHIPPS PLAZA

PEACHTREE ROAD

WIEUCA ROAD

# THE BLOCK AT PHIPPS

**THE BLOCK AT PHIPPS** occupies an entire city block in one of the best retail corridors in the Southeast, and is being reimagined to create a vibrant and active retail experience. The vision includes new merchandising along with thoughtfully designed façade improvements, and enhanced connectivity bringing 50,000 SF of flagship retail and restaurant space — a very rare opportunity on Peachtree Road in Buckhead. For locals and visitors alike, The Block will be the center of life, a convenient getaway while also being an engaging gathering place with unique, upscale offerings.





**B**

AT PHIPPS

**REIMAGINED**  
EXPERIENCE

**9.5**  
ACRES

**50,000 SF**  
FLAGSHIP SHOPPING  
& DINING  
SPACE AVAILABLE

HEART OF  
**BUCKHEAD**

**RICHLY  
APPOINTED  
STOREFRONTS**

WALKABLE &  
**CONNECTED**

**PEACHTREE  
& WIEUCA**  
ROADS

4 LEVEL  
**COVERED  
DECK  
PARKING**



## INVITING PASEO

ENHANCED PEDESTRIAN EXPERIENCE  
FEATURING A 30FT OPEN AIR CORRIDOR  
CONNECTING PEACHTREE ROAD TO THE  
PARKING DECK



PASEO ENTRANCE FROM PEACHTREE ROAD



**PASEO ENTRANCE FROM  
PARKING DECK**

# LEVEL 2 SITE PLAN

## SUITE 220



Suite 200	Target	Suite 225	Iron Hill Brewery	Suite 240B	AVAILABLE	6,894 SF
Suite 210	Les Mains Nail Bar	Suite 230	AVAILABLE	3,429 SF	Suite 250	Dicks Sporting Goods
Suite 215	AVAILABLE	7,984 SF	Suite 235	AVAILABLE	3,606 SF	
Suite 220	AVAILABLE	3,789 SF	Suite 240A	AVAILABLE	4,671 SF	

# SITE PLAN



Suite 100	Publix
Suite 510	AVAILABLE 1,384 SF
Suite 520	UPS Store
Suite 530	AVAILABLE 2,026 SF
Suite 530A	Subway


Suite 540	Pro Cleaners
Suite 200	Target
Suite 210	Les Mains Nail Bar
Suite 215	AVAILABLE 7,984 SF
Suite 220	AVAILABLE 3,789 SF

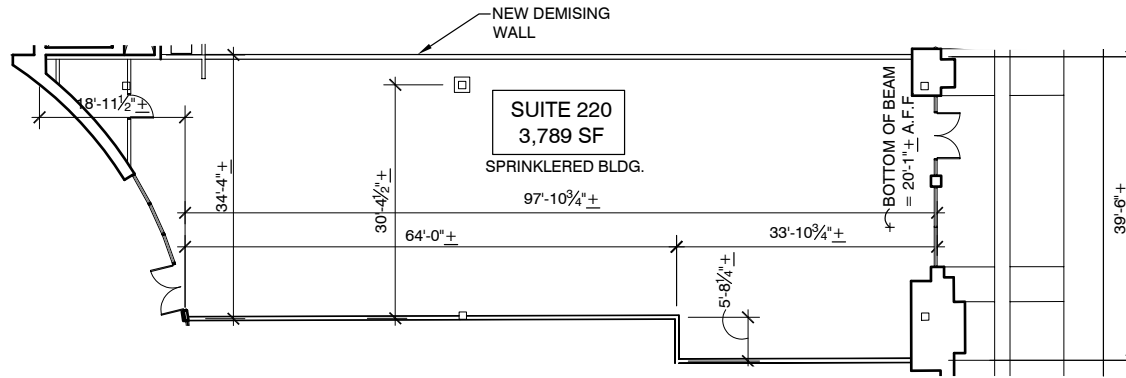
Suite 225	Iron Hill Brewery
Suite 230	AVAILABLE 3,429 SF
Suite 235	AVAILABLE 3,606 SF
Suite 240A	AVAILABLE 4,671 SF
Suite 240B	AVAILABLE 6,894 SF

Suite 250	Dicks Sporting Goods
Suite 300	LA Fitness
Suite 310	Salon Lofts
Suite 320	Roam Innovative Workplace



EXCEPT WITH RESPECT TO THE OBLIGATIONS OF LANDLORD WHICH ARE EXPRESSLY PROVIDED IN THE LEASE, LANDLORD HAS MADE NO AGREEMENT, REPRESENTATION OR WARRANTY WITH RESPECT TO THE EXISTENCE OR CREATION OF ANY LEASE, OCCUPANCY OR LIEN OF ANY SPACE, OR THE EXISTENCE, DESIGN OR LOCATION OF ANY BUILDING, IMPROVEMENTS, PARKING AREAS, CURB CUTS, DRIVES OR OTHER COMMON AREAS WITH RESPECT TO THE BENCHMARK CENTER OR ANY CURB CUTS OR OTHER FACILITY. LANDLORD BELIEVES THAT THE INFORMATION CONTAINED WITHIN THIS DRAWING IS PRESENTLY CORRECT, BUT LANDLORD MAKES NO WARRANTY, REPRESENTATION OR GUARANTEE AS TO ITS ACCURACY OR WHETHER IT WILL REMAIN AS CONFIGURED, AND LANDLORD RECOMMENDS THAT ALL INFORMATION BE FIELD VERIFIED PRIOR TO DESIGN AND CONSTRUCTION.

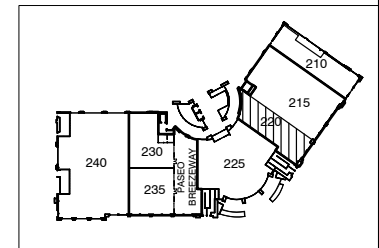
LEGEND	
	OUTDOOR AREA
AREA	= 3,789 SF
FINISH FLOOR	= 1002±
CLEAR HEIGHT	= 20'-1"± (SEE PLAN)



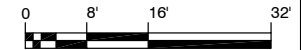
## SUITE 220 - FLOOR PLAN

3535 PEACHTREE ROAD, SUITE 220  
ATLANTA, GA 30326

ATL THE BLOCK GA  
AT PHIPPS



KEY PLAN  
SCALE: 1"=60'



SCALE: 1/16"=1'-0"

DRAWN BY: CO

DATE: 02/10/23



1100 SPRING STREET NW SUITE 550  
ATLANTA, GEORGIA 30309-2848  
TEL (404) 876-5511 FAX (404) 876-2829

# LENOX MARKETPLACE



## RENTAL RATES: SUITE 220

Rental Rate PSF	\$60.00
Approx. SF	3,789
Ancillary Charges*	\$8.94
Total Monthly Charges	\$21,767.81
*CAM / Taxes / Insurance / Trash (charges are approximate)	

## FEATURED TENANTS:

**IRON HILL**  
BREWERY & RESTAURANT

**Publix**

**LA|FITNESS.**

**DICK'S**  
SPORTING GOODS

**TARGET**

**ups**

**SALON LOFTS™**

**roam**  
INNOVATIVE WORKPLACE

ATL THE  
**B L O C K** GA  
AT PHIPPS

EXCLUSIVELY MARKETED BY:

Shirley A. Gouffon

(404) 898 9012

[sgouffon@seligenterprises.com](mailto:sgouffon@seligenterprises.com)

Mindy Selig

(404) 898 9049

[mselig@seligenterprises.com](mailto:mselig@seligenterprises.com)



 **SELIG**